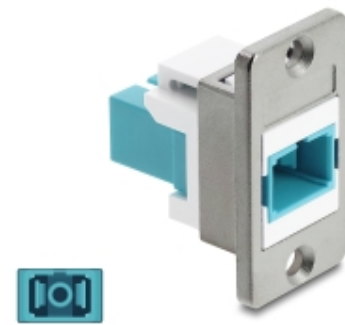


Panel Mount SC Simplex female to SC Simplex female silver / aqua / white

Description

This fibre optic panel mount by Delock can be used to connect fibre optic cables and is suitable for installation in a housing.



Item no. 91102

EAN: 4043619911028

Country of origin: China

Package: Zip poly bag

Technical details

- Connectors:
1 x SC Simplex female
1 x SC Simplex female
- Colour: aqua
- For multi-mode fiber
- ~~Waterproof~~
- Integrated name plate
- Panel cut-out (WxH): ca. 16.8 x 22.3 mm
- Countersink for conical screws, distance ca. 28.9 mm
- Mounting hole diameter: ca. 3.3 mm
- Screw type: #4-40 UNC
- Material: zinc diecast / plastic
- Colour: silver / violet / white
- Dimensions (LxWxH): 27.4 x 19.0 x 35.5 mm

Package content

- Panel Mount

Images



General

Style:	both sides identical
--------	----------------------

Interface

Connector 1:	1 x SC Simplex female
Connector 2:	1 x SC Simplex female

Physical characteristics

Material:	zinc diecast / plastic
Length:	27.4 mm
Width:	19.0 mm
Height:	35.5 mm
Colour:	aqua white silver

Manufacturer information

Street	Beeskowdamm 13/15
Postal code	14167
City	Berlin
Country	Deutschland
E-Mail	info@delock.de
Website	www.delock.de