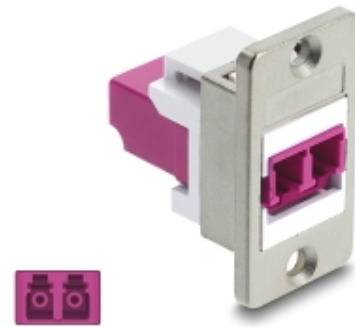


Panel Mount LC Duplex female to LC Duplex female silver / violet / white

Description

This fibre optic panel mount by Delock can be used to connect fibre optic cables and is suitable for installation in a housing.



Item no. 91100

EAN: 4043619911004

Country of origin: China

Package: Zip poly bag

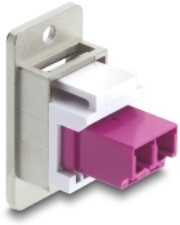
Technical details

- Connectors:
 - 1 x LC Duplex female
 - 1 x LC Duplex female
- For multi-mode fiber
- ~~Discontinued~~
- Integrated name plate
- Panel cut-out (WxH): ca. 16.8 x 22.3 mm
- Countersink for conical screws, distance ca. 28.9 mm
- Mounting hole diameter: ca. 3.3 mm
- Screw type: #4-40 UNC
- Material: zinc diecast / plastic
- Colour: silver / violet / white
- Dimensions (LxWxH): 29.2 x 19.1 x 35.5 mm

Package content

- Panel Mount

Images



General

Style:	both sides identical
--------	----------------------

Interface

Connector 1:	1 x LC Duplex female
Connector 2:	1 x LC Duplex female

Physical characteristics

Material:	zinc diecast / plastic
Length:	29.2 mm
Width:	19.0 mm
Height:	35.5 mm
Colour:	white silver violet

Manufacturer information

Street	Beeskowdamm 13/15
Postal code	14167
City	Berlin
Country	Deutschland
E-Mail	info@delock.de
Website	www.delock.de

