

Fiber Optic Patch Panel 6 port for SC Simplex or LC Duplex grey metal for DIN rail mounting

Description

This fiber optic patch panel by Delock is suitable for mounting on a 35 mm wide DIN rail and can accommodate up to 6 fiber optic couplers of the types SC Simplex or LC Duplex.

With splice cassette

The integrated splice cassette allows for the clean routing of individual fibers, ensuring optimal transmission of optical signals.



Item no. 91066

EAN: 4043619910663

Country of origin: China

Package: Box

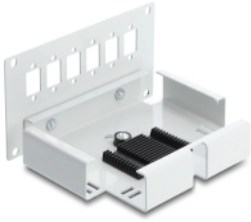
Technical details

- 6 slots for SC Simplex or LC Duplex couplings
 - Rectangular cut-out: 13.2 x 9.5 mm
 - Mounting hole diameter: ca. 2.7 mm
 - Pitch of screw hole: ca. 18.0 mm
- DIN rail mounting: 35 mm
- With splice cassette
- PG13.5 cable gland
- Environmental temperature: -40 °C ~ 75 °C
- Housing colour: grey
- Housing material: metal
- Dimensions (LxWxH): ca. 110 x 98 x 61 mm

Package content

- Fiber optic distribution box

Images



General

| | |
|----------------|--------------------------|
| Mounting type: | DIN rail mounting: 35 mm |
|----------------|--------------------------|

Technical characteristics

| | |
|----------------------|----------------|
| Storage temperature: | -40 °C ~ 75 °C |
|----------------------|----------------|

Physical characteristics

| | |
|-------------------------|--------|
| Housing colour: | grey |
| Housing material: | metal |
| Length: | 110 mm |
| Width: | 98 mm |
| Height: | 61 mm |
| Mounting hole diameter: | 2.7 mm |

Manufacturer information

| | |
|-------------|-------------------|
| Street | Beeskowdamm 13/15 |
| Postal code | 14167 |
| City | Berlin |
| Country | Deutschland |
| E-Mail | info@delock.de |
| Website | www.delock.de |