

# Fiber Optic Patch Panel 6 port for SC Duplex or LC Quad grey metal for DIN rail mounting

## Description

This fiber optic patch panel by Delock is suitable for mounting on a 35 mm wide DIN rail and can accommodate up to 6 fiber optic couplers of the types SC Duplex or LC Quad.

### With splice cassette

The integrated splice cassette allows for the clean routing of individual fibers, ensuring optimal transmission of optical signals.



**Item no. 91065**

EAN: 4043619910656

Country of origin: China

Package: Box

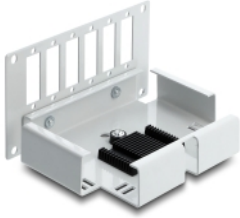
## Technical details

- 6 slots for SC Duplex or LC Quad couplings
  - Rectangular cut-out: 26.2 x 9.5 mm
  - Mounting hole diameter: ca. 2.7 mm
  - Pitch of screw hole: ca. 30.7 mm
- DIN rail mounting: 35 mm
- With splice cassette
- PG13.5 cable gland
- Environmental temperature: -40 °C ~ 75 °C
- Housing colour: grey
- Housing material: metal
- Dimensions (LxWxH): ca. 110 x 98 x 61 mm

## Package content

- Fiber optic distribution box

## Images



## General

Mounting type:	DIN rail mounting: 35 mm
----------------	--------------------------

## Technical characteristics

Storage temperature:	-40 °C ~ 75 °C
----------------------	----------------

## Physical characteristics

Housing colour:	grey
Housing material:	metal
Length:	110 mm
Width:	98 mm
Height:	61 mm
Mounting hole diameter:	2.7 mm

## Manufacturer information

---

Street	Beeskowdamm 13/15
Postal code	14167
City	Berlin
Country	Deutschland
E-Mail	info@delock.de
Website	www.delock.de