

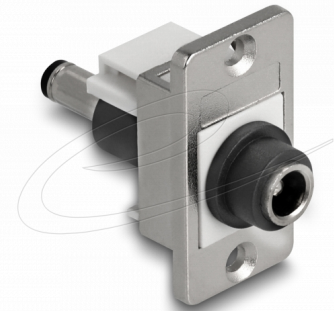
Delock Panel Mount DC 5.5 x 2.1 mm female to DC 5.5 x 2.5 mm male silver / white / black

Description

This DC female bulkhead by Delock can be installed or cabled in a housing or a device in order to supply it with power.

Please Note

To ensure the correct function of the connected device, it must match the specifications for voltage, current and polarity of the power supply.



Item no. 90885

EAN: 4043619908851

Country of origin: China

Package: Zip poly bag

Technical details

- Connectors:
 - external: 1 x DC 5.5 x 2.1 mm female
 - internal: 1 x DC 5.5 x 2.5 mm male
- Gold-plated connectors
- Integrated name plate
- Panel cut-out (WxH): ca. 16.8 x 22.3 mm
- Countersink for conical screws, distance ca. 28.9 mm
- Mounting hole diameter: ca. 3.3 mm
- Screw type: #4-40 UNC
- Material: zinc diecast / plastic
- Colour: silver / white / black
- Dimensions (LxWxH): 42.3 x 19.0 x 35.5 mm

Package content

- Panel Mount

Images



Interface

Connector 1:	1 x DC 5.5 x 2.1 mm female
Connector 2:	1 x DC 5.5 x 2.5 mm male

Physical characteristics

Material:	zinc diecast / plastic
Length:	42.3 mm
Width:	19.0 mm
Height:	35.5 mm
Colour:	black white silver

Manufacturer information

Street	Beeskowdamm 13/15
Postal code	14167
City	Berlin
Country	Deutschland
E-Mail	info@delock.de
Website	www.delock.de