

Mobile Rack for 2 x M.2 NVMe SSD with SFF-8654 connector for 12.7 mm Slim ODD Bay

Description

This mobile rack by Delock can be installed into a **slim ODD/FDD bay** and provides **two M.2 slots** in 2280, 2260, 2242 or 2230 format.

Suitable for slim ODD/FDD slot

Due to the application area of the mobile rack for M.2 SSDs, it is 159.3 mm and thus longer than conventional slim drives. It **replaces the optical drive** with a high-performance, tool-free removable storage solution, ideal for high-performance PCs, workstations and industrial applications.

Quick change of SSD

Due to the special mechanism, the SSD can be **exchanged quickly and easily**. For example, data backups can be taken and stored in a safe place.

Tray with key lock and springs

The mobile rack is equipped with a **key lock** to prevent unauthorised access. The stable carrier of metal has springs on the top and bottom which **reduce vibrations** and therefore support its **use in mobile devices**.

Please Note

Special care must be taken that the tray is fully inserted, otherwise no connection to the SSD can be established.



Item no. 47138

EAN: 4043619471386

Country of origin: China

Package: Box

Technical details

- Connectors:
 - Mobile Rack:
 - internal:
 - 2 x M.2 key M slot
 - external:
 - 2 x Slim SAS SFF-8654 4i female
 - 2 x 4 pin Floppy male
 - 2 x 2 pin pin header for fan
 - M.2 tray:

- 1 x M.2 key M male
 - 1 x M.2 key M slot
 - Interface: PCIe 4.0 / NVMe
 - Supports M.2 modules in format 2280, 2260, 2242 and 2230 with key M or key B+M based on PCIe
 - Maximum height of the components on the module: 1.5 mm, application of double-sided assembled modules supported
 - 2 x LED indicator
 - Bootable, ex UEFI version 2.3.1
 - M.2 tray made of metal
 - Robust metal housing
 - Supports NVM Express (NVMe)
 - Supports S.M.A.R.T.
 - Operating temperature: -40 °C ~ 85 °C
 - Dimensions (LxWxH): ca. 159.3 x 128.1 x 12.7 mm
-

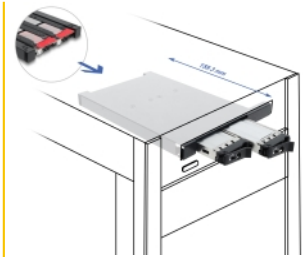
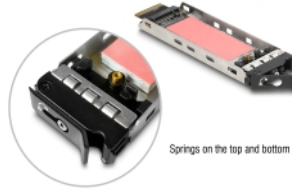
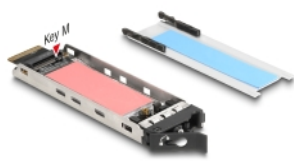
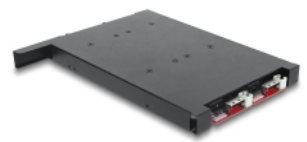
System requirements

- A free slim ODD bay
 - A free Slim SAS SFF-8654 port for each M.2 slot
 - Power supply with a free SATA power connector
-

Package content

- Mobile Rack with 2 x M.2 tray
- 1 x Power cable
- 6 x screw IM 2.0 x 4.0 mm, head 5.0 mm
- 2 x keys
- User manual

Images



General

Function:	NVM Express (NVMe) bootable S.M.A.R.T.
LED indicator:	2 x
Slot:	PCIe
Supported module:	M.2 modules in format 2280, 2260, 2242 and 2230 with key M or key B+M based on PCIe
Maximum height of the components on the module:	1.5 mm application of double-sided assembled modules supported

Interface

External:	2 x 4 pin Floppy male 2 x 2 pin pin header for fan 2 x Slim SAS SFF-8654 4i female
Internal:	2 x M.2 key M slot

Technical characteristics

Operating temperature:	-40 °C ~ 85 °C
------------------------	----------------

Physical characteristics

Housing material:	metal
Length:	159,3 mm
Width:	128.1 mm
Height:	12.7 mm

Manufacturer information

Street	Beeskowdamm 13/15
Postal code	14167
City	Berlin
Country	Deutschland
E-Mail	info@delock.de
Website	www.delock.de

